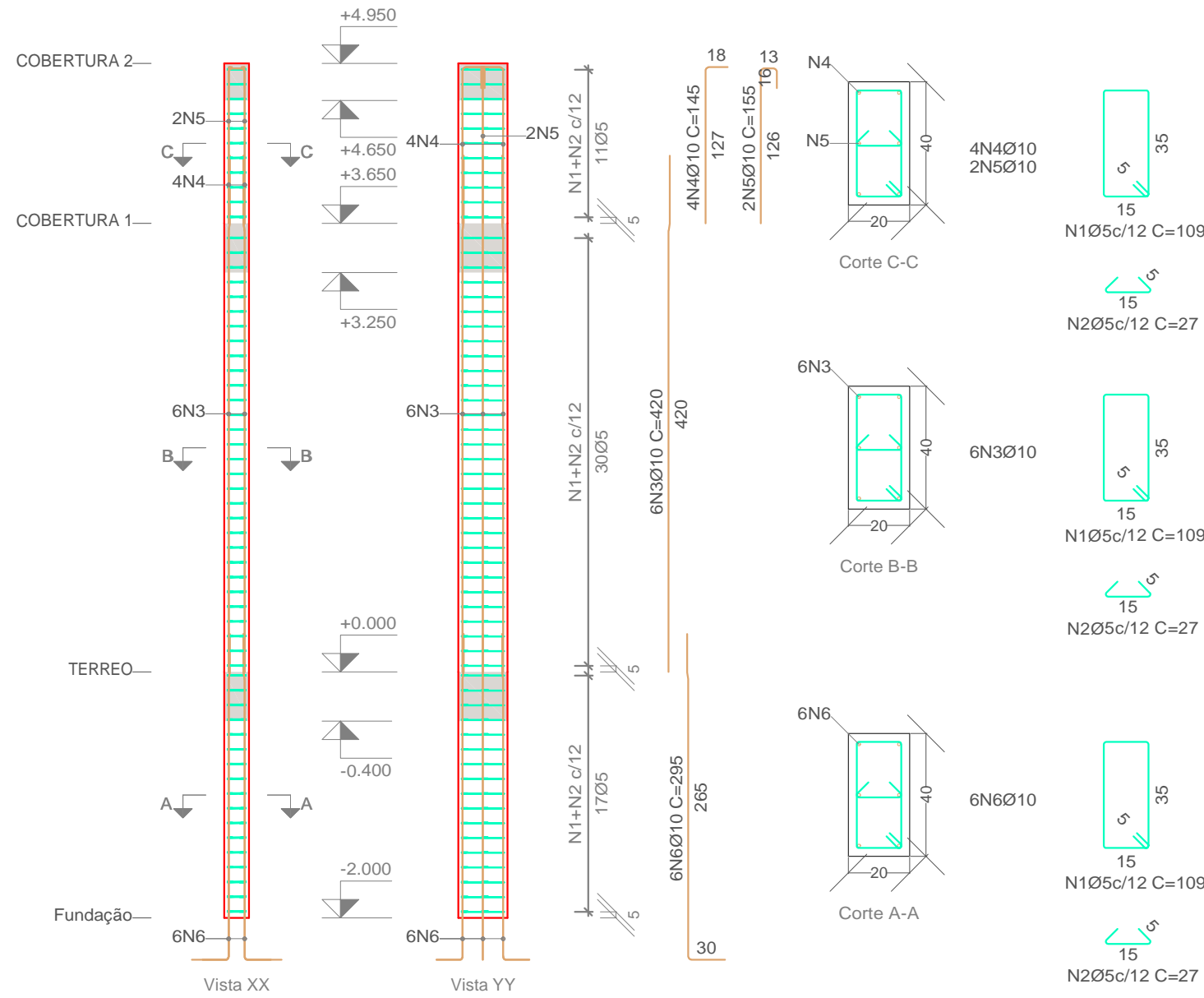
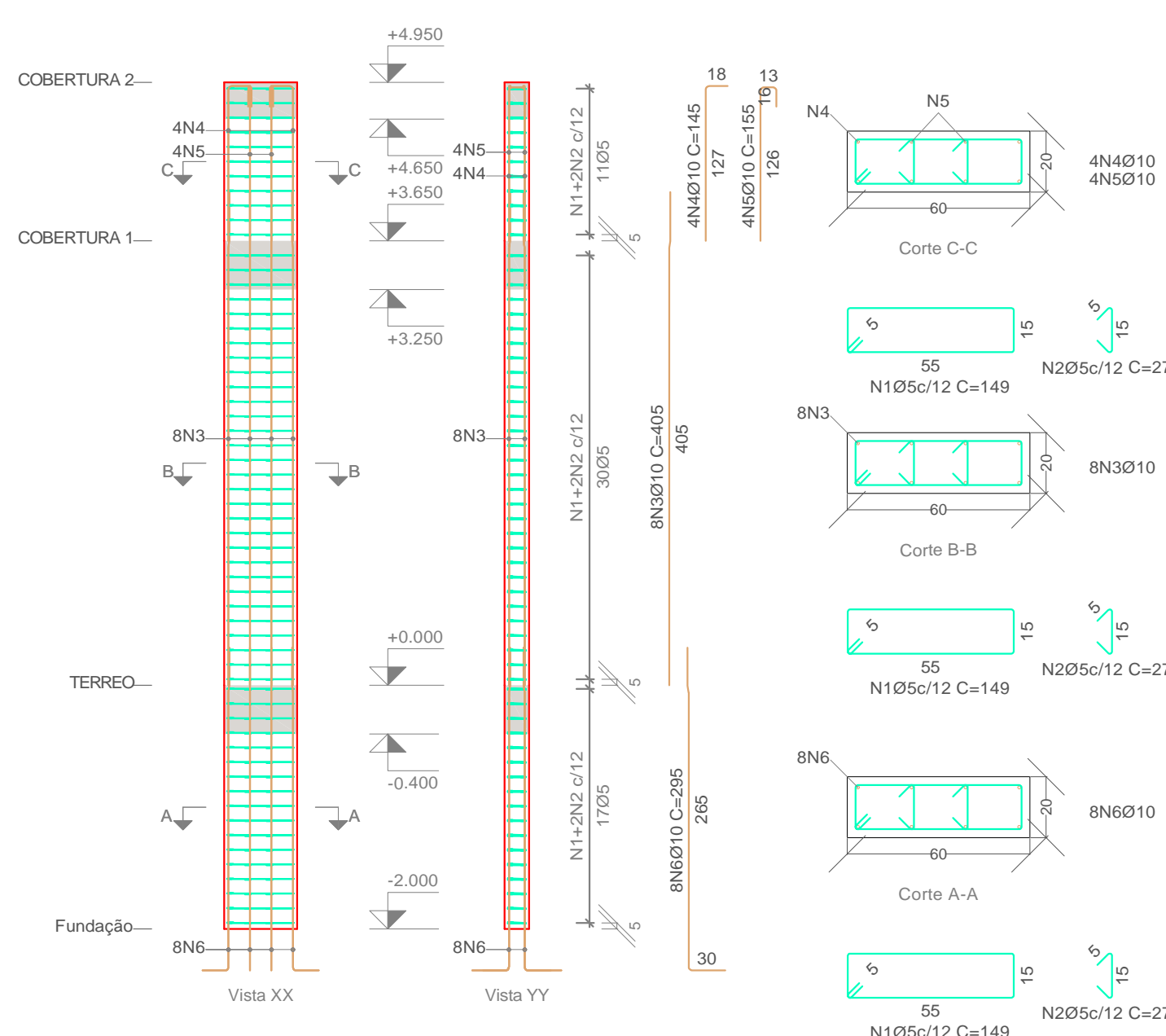


PILARES

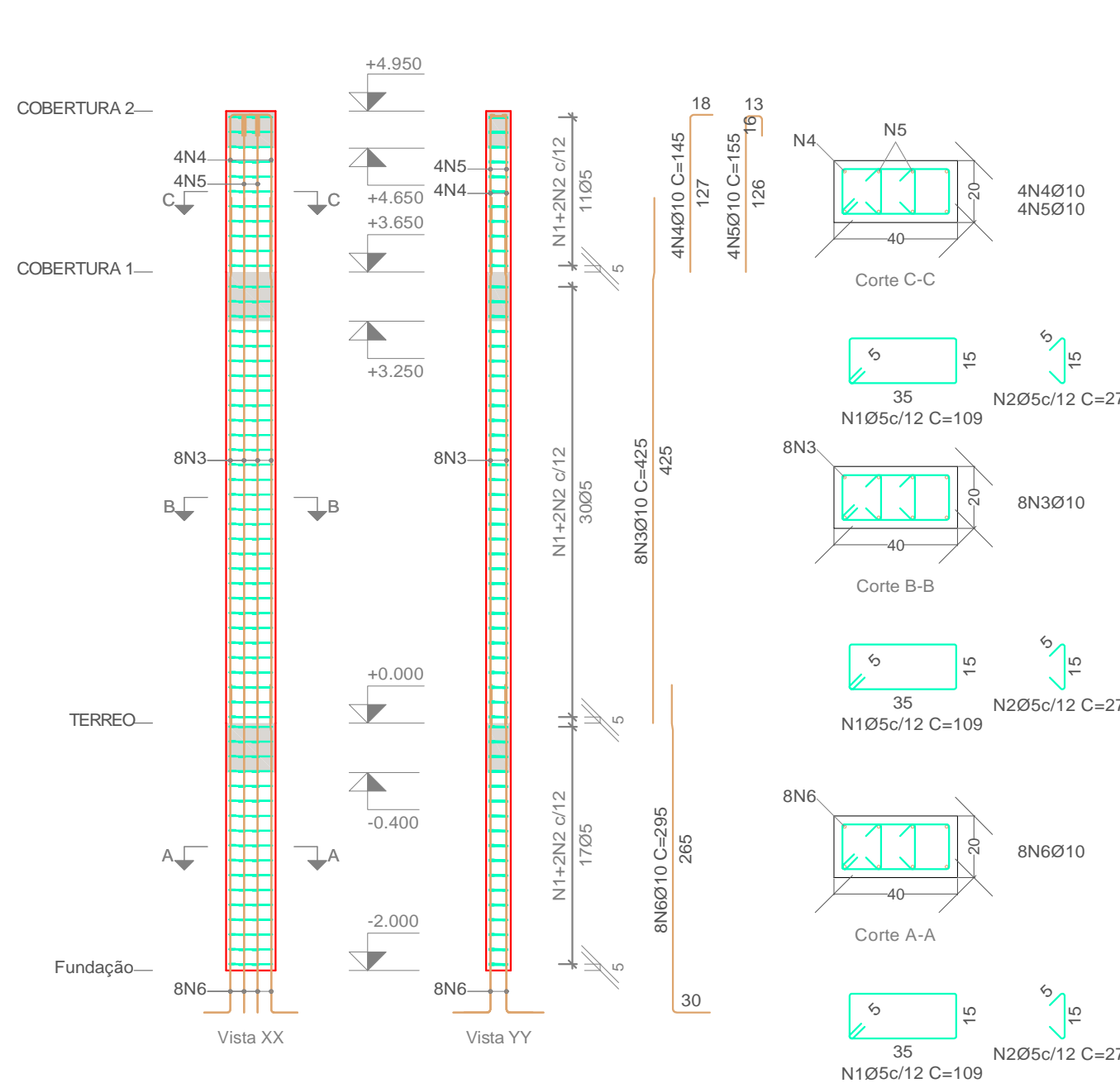
P 18-P27-P28-P35-P38-P41-P43-P47-P49-P50
Esc.1:50



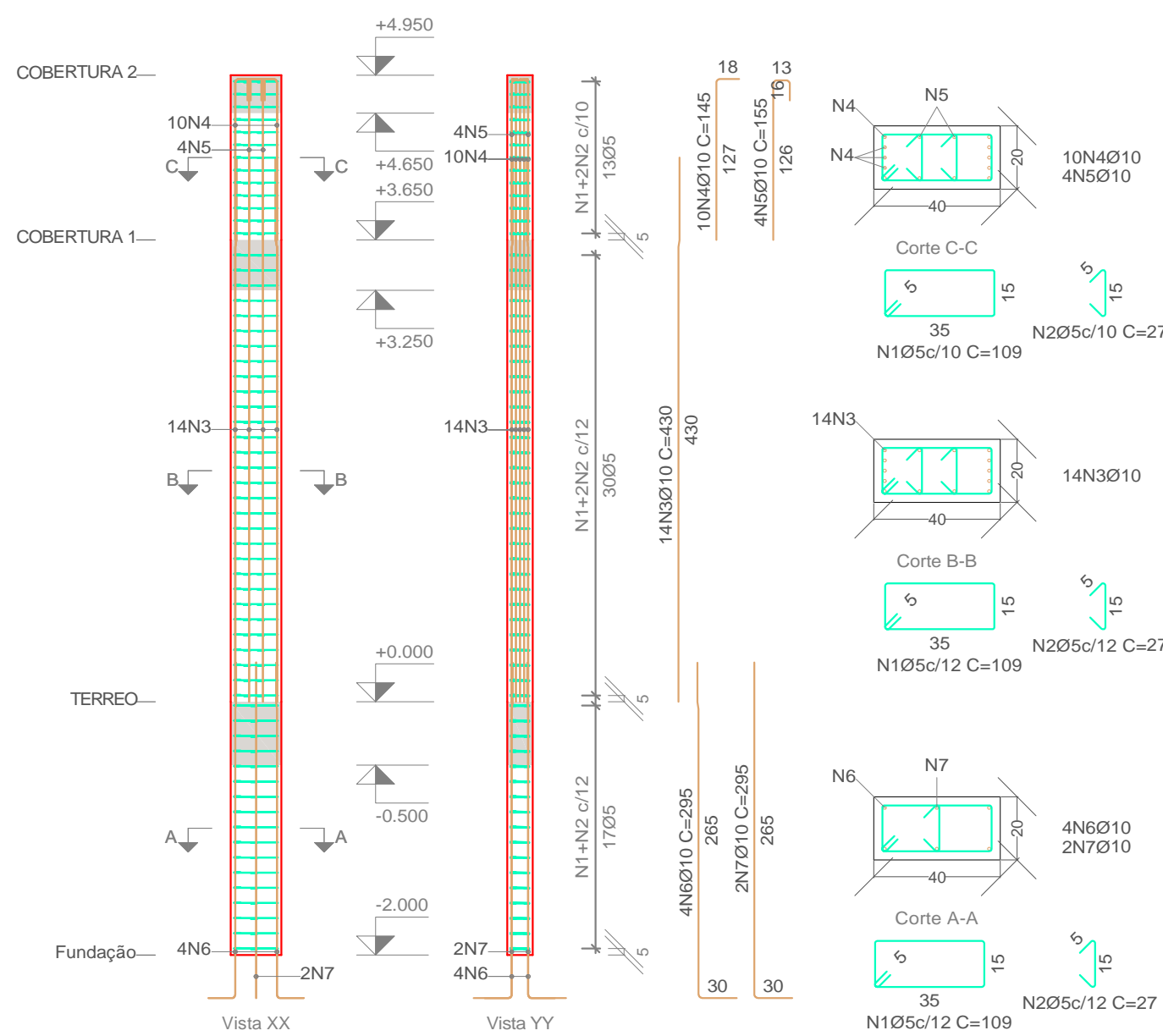
P 27
Esc.1:50



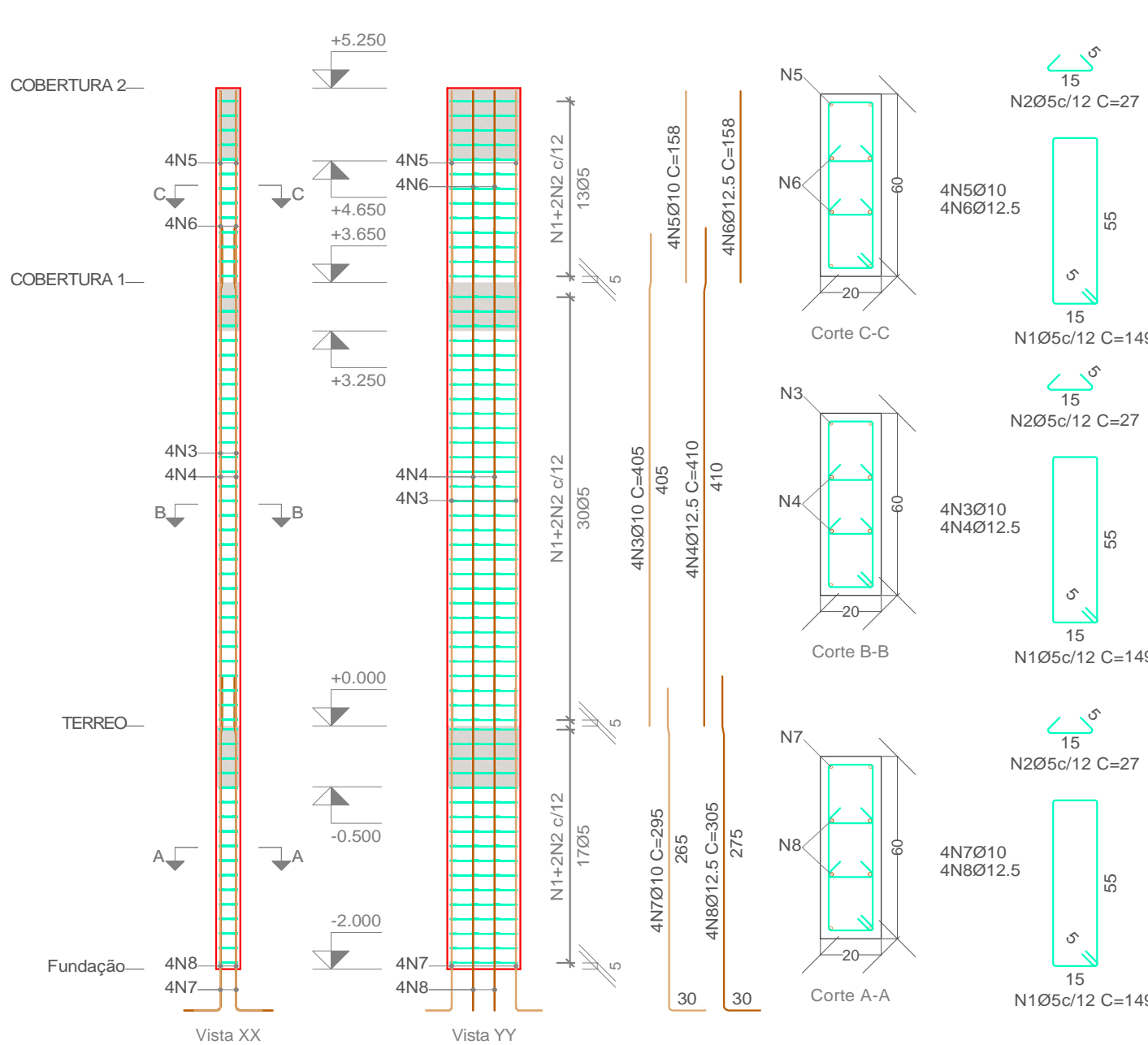
P 29
Esc.1:50



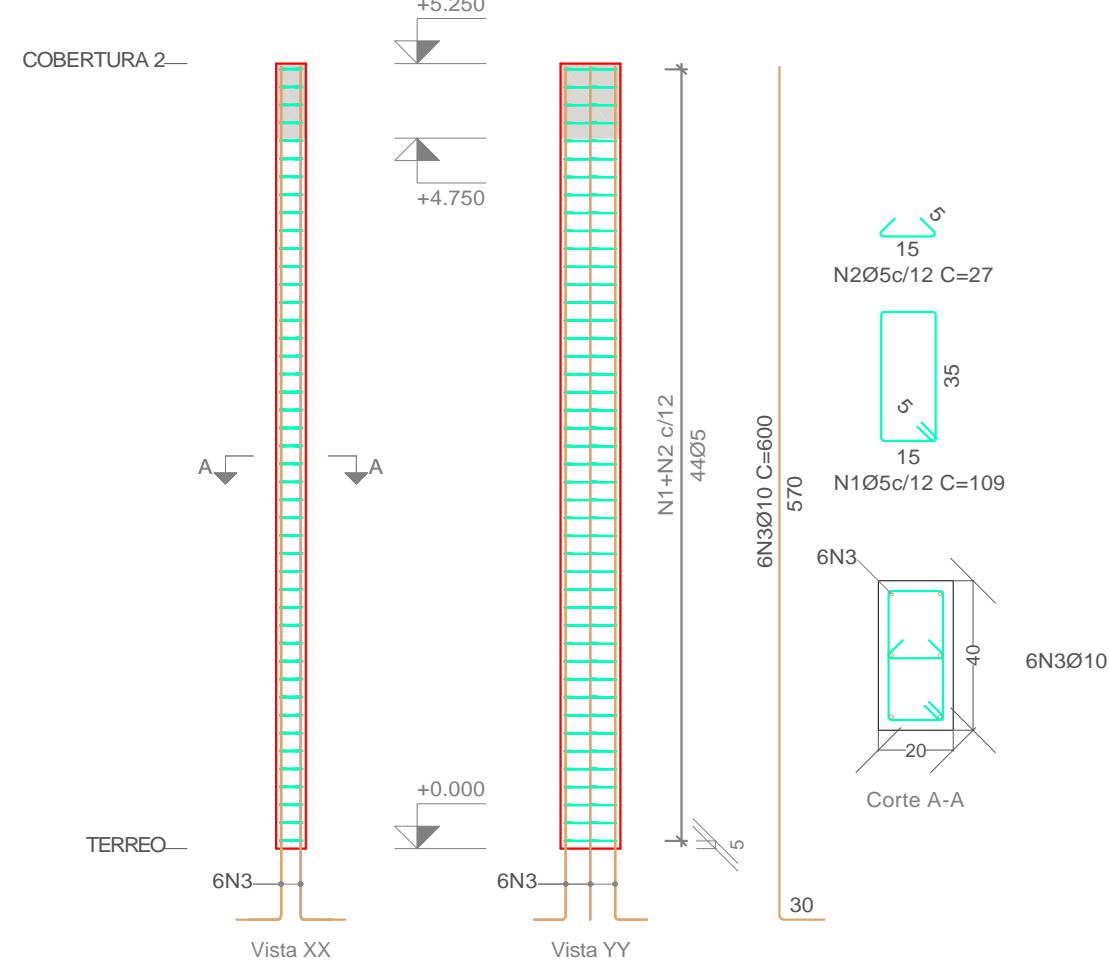
P 30
Esc.1:50



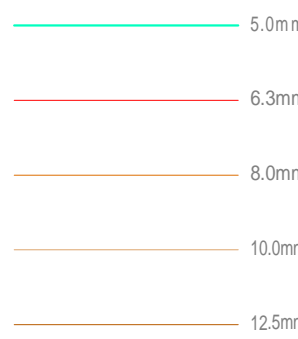
P 31
Esc.1:50



P 32
Esc.1:50



LEGENDA



Elemento	Pos.	Diam.	Q.	Dob. (cm)	Reta (cm)	Dob. (cm)	Comp. (cm)	Total (cm)	CA-50 (kg)	CA-60 (kg)
P15=P16=P19 P20=P21=P23 P26=P48	1 Ø5 2 Ø5 3 Ø10 4 Ø10	47 6 6 6					109 27 363 295	5123 1269 2178 1770	8.0 2.0 13.4 10.9	
Total+10%:									26.7 (x8):213.6	11.0 88.0
P17	1 Ø5 2 Ø5 3 Ø10 4 Ø10	47 94 8 8					149 27 363 295	7003 2538 2904 2360	11.0 4.0 17.9 14.5	
Total+10%:									35.6	16.5
P18=P22=P28 P35=P38=P41 P43=P47=P49 P50	1 Ø5 2 Ø5 3 Ø10 4 Ø10 5 Ø10 6 Ø10	58 58 6 4 2 6					109 27 420 145 155 295	6322 1566 2520 580 310 1770	9.9 2.5 15.5 3.6 1.9 10.9	
Total+10%:									35.1 (x10):351.0	13.6 136.0
P27	1 Ø5 2 Ø5 3 Ø10 4 Ø10 5 Ø10 6 Ø10	58 116 8 4 4 8					149 27 405 145 155 295	8642 3132 3240 580 620 2360	13.6 4.9 20.0 3.6 3.8 14.5	
Total+10%:									46.1	20.4
P29	1 Ø5 2 Ø5 3 Ø10 4 Ø10 5 Ø10 6 Ø10	58 116 8 4 4 8					109 27 425 145 155 295	6322 3132 3400 580 620 2360	9.9 4.9 21.0 3.6 3.8 14.5	
Total+10%:									47.2	16.3
Ø5:									0.0	277.2
Ø10:									693.5	0.0
Total:									693.5	277.2



- NOTAS
- 1 - A EXECUÇÃO DO ESCORAMENTO, DO RE-ESCORAMENTO E DO CIMBRAMENTO DEVE RESPEITAR A NBR 15696.
 - 2 - RETIRAR ESCORAMENTO APÓS 28 DIAS DA CONCRETAGEM
 - 3 - QUALQUER MODIFICAÇÃO OU DÚVIDA NO PROJETO DEVERÁ SER IMEDIATAMENTE INFORMADA AO PROJETISTA ESTRUTURAL

COBRIMENTOS MÍNIMOS

LAJE E ESCADA: 2,5cm
PILAR: 2,5cm
PILAR (CONTATO COM O SOLO): 2,5cm

SAPATA: 4cm
VIGA: 2,5cm

CONCRETO

fck = 30 MPa

AÇO: CA-50 E CA-60



PREFEITURA MUNICIPAL
SANTO ANTÔNIO DE LEVERGER

PILAR
P18-P27-P28-P35-P38-P41-P43-
P47 P49 P50 P 27 P 29 P 30 P 31 P 32

RESP. TÉCNICO: Maycon Henrique Moraes Rodrigues
CREA - MT: 51648

PROPRIETÁRIO: Prefeitura Municipal de Santo Antônio de Leverger
CNPJ: 03.507.555/0001-12

20

20 - 31